

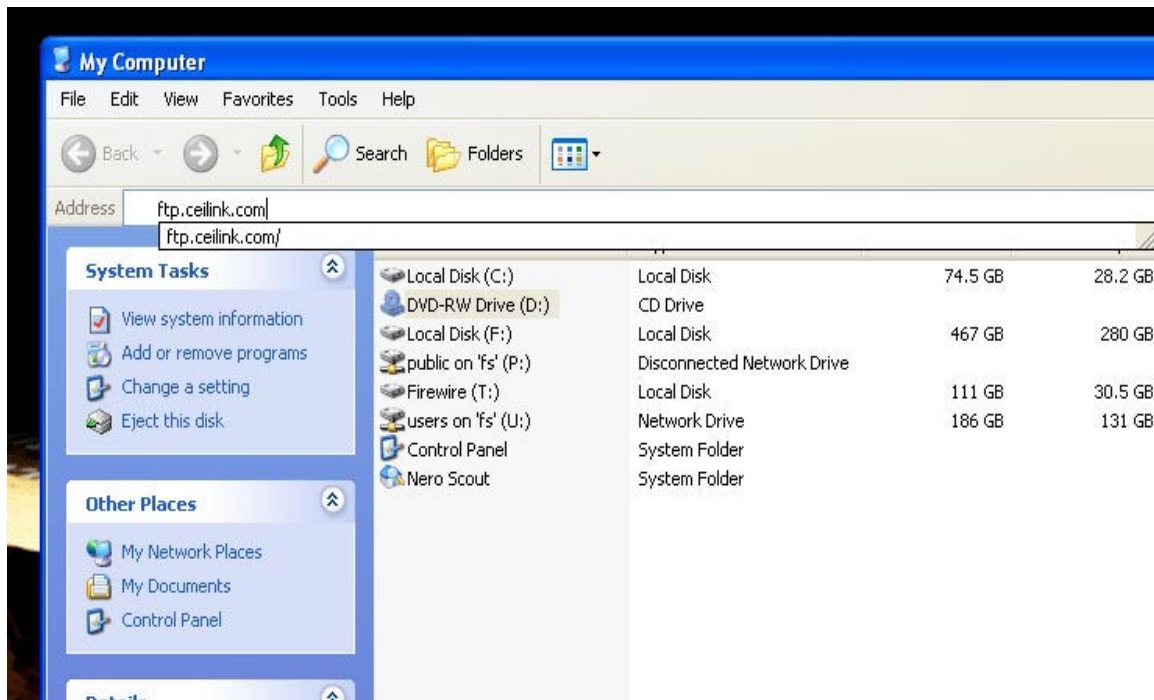
STEPS TO CONNECT TO CEI FTP SITE WHEN RUNNING WINDOWS XP

With the release of Internet Explorer 7, Microsoft essentially stripped FTP capabilities from the web browser and has forced us to rely on Windows XP for any FTP functionality. Most other web browsers do not support FTP directly and rely on the operating system as well.

It is important to remember that the best tool for transferring files via FTP is a dedicated FTP program. These programs usually have the ability to resume failed downloads of large files as well as other features. Since many clients do not have these on their PCs, we have another solution for those running XP that is relatively simple and does not require a dedicated FTP program. It is fairly reliable but does not allow you to resume a download/upload in progress if the transfer is interrupted for some reason. This method has not been verified on Windows Vista but may still work.

1. Open up "My Computer".
2. In the address area where it says "My Computer" type in <ftp.ceilink.com>

(In the rare event that you do not see the address bar, it can be turned on by going to view/toolbars in the menu at the top and checking the "address bar". This feature is typically turned on by default.)

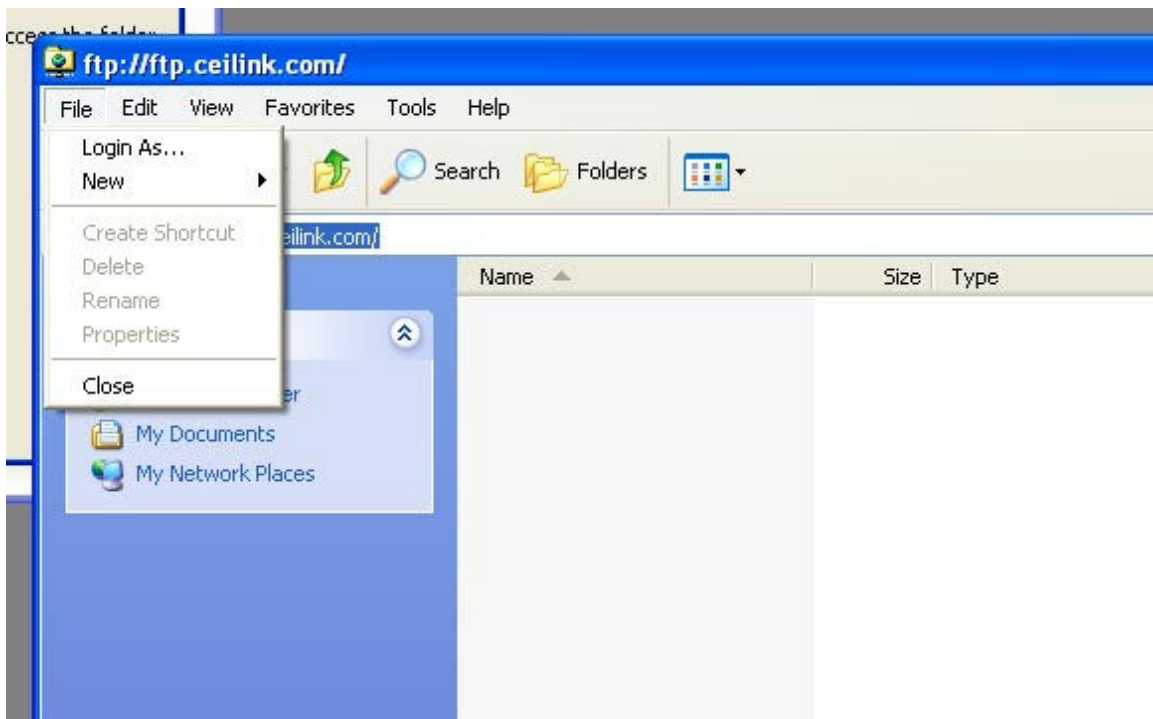


3. Press enter when you are done typing and you will get the following error message



This error is normal and is expected as our FTP site does not allow for anonymous logons. The clients must enter a username and password.

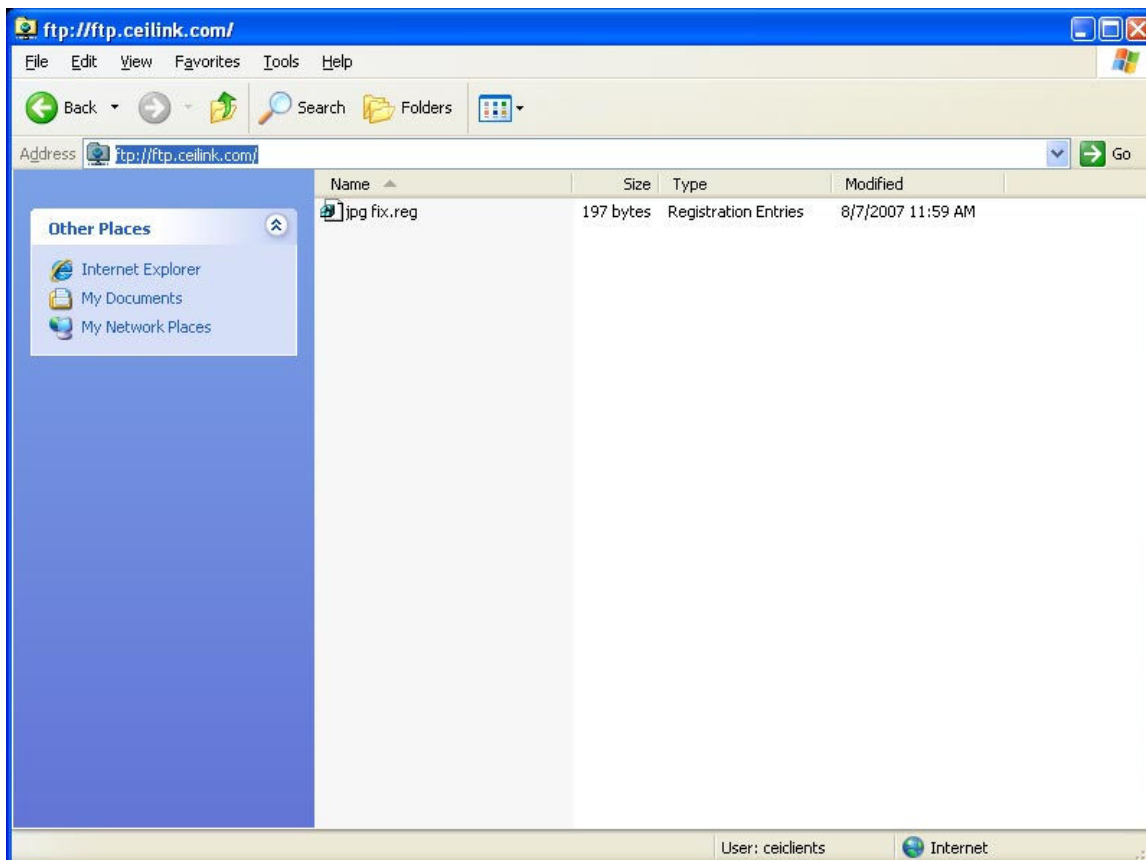
4. Go to the file menu and select the option that says “Login as”



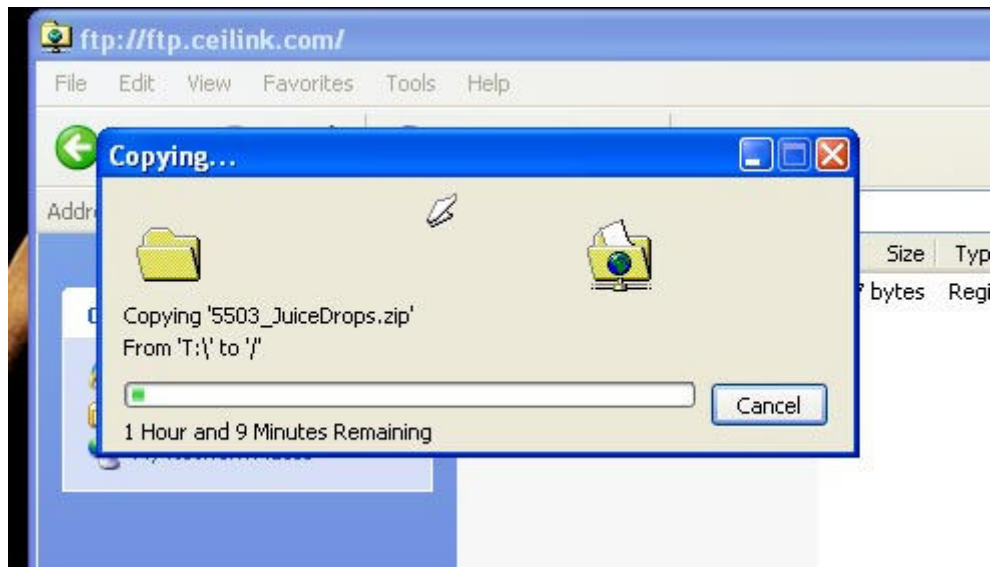
A login window will pop up and ask for username and password. Use the same username and password provided to you by your account manager, then click the logon button.



If you entered the username and password correctly you will be directed into a windows style folder that shows the contents of the FTP site for that client.



5. Each client is directed to their own unique folder based on their username. This folder will now behave like a windows folder. You can drag and drop files to and from this. Remember that this is a connection made over the internet so expect it to take some time to move large files. Below is the estimated upload time for an 80 megabyte file. These times vary depending on the time of day and the congestion on the internet. Typically downloads will be much faster than uploads.



Good Luck and if you have any question please call your account representative.